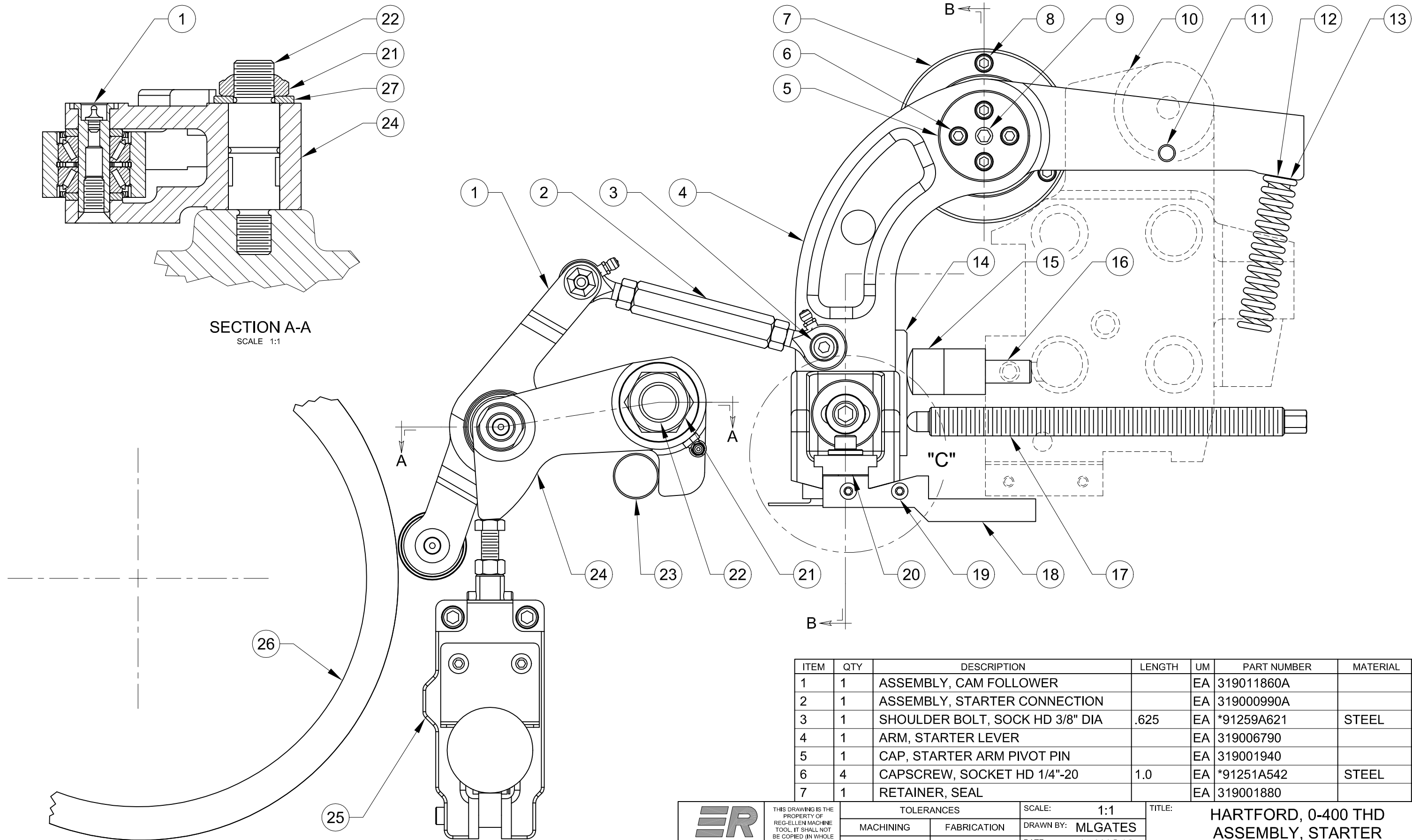


SECTION A-A
SCALE 1:1



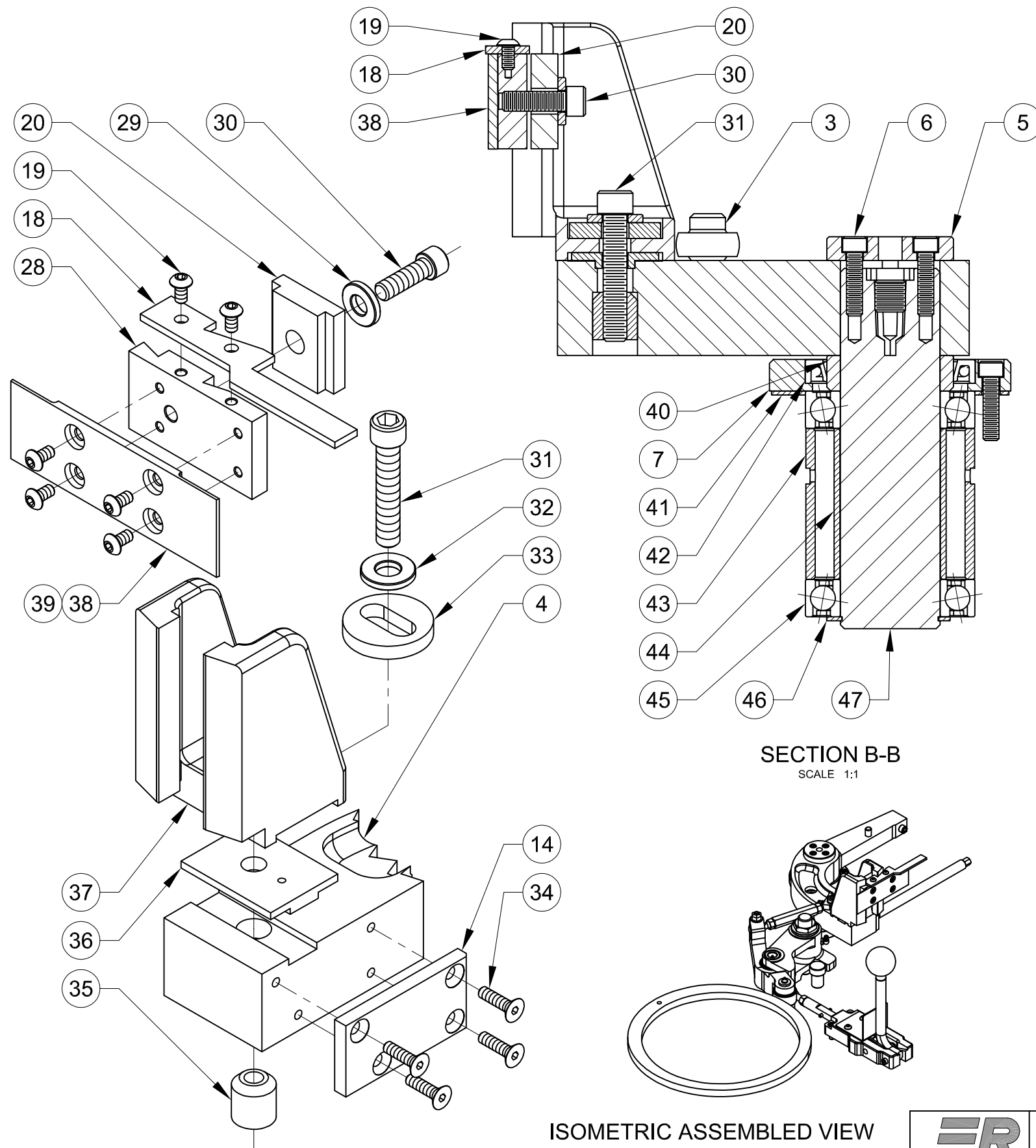
ITEM	QTY	DESCRIPTION	LENGTH	UM	PART NUMBER	MATERIAL	TYP
1	1	ASSEMBLY, CAM FOLLOWER		EA	319011860A		D
2	1	ASSEMBLY, STARTER CONNECTION		EA	319000990A		D
3	1	SHOULDER BOLT, SOCK HD 3/8" DIA	.625	EA	*91259A621	STEEL	P
4	1	ARM, STARTER LEVER		EA	319006790		D
5	1	CAP, STARTER ARM PIVOT PIN		EA	319001940		D
6	4	CAPSCREW, SOCKET HD 1/4"-20	1.0	EA	*91251A542	STEEL	P
7	1	RETAINER, SEAL		EA	319001880		D



THIS DRAWING IS THE PROPERTY OF REG-ELLEN MACHINE TOOL. IT SHALL NOT BE COPIED (IN WHOLE OR IN PART), FOR MANUFACTURE OR OTHERWISE DISCLOSED WITHOUT PRIOR WRITTEN CONSENT.

TOLERANCES		SCALE:	1:1
MACHINING	FABRICATION	DRAWN BY:	MLGATES
X. ±.040	ALL ±.06	DATE:	15AUG18
X.X ±.020	ANGULAR 2°	CHECKED BY:	
X.XX ±.010	ALL FINISHES 125mu	DATE:	
X.XXX ±.005	DEBURR ALL SHARP CORNERS OR EDGES		
ANGULAR ± 1/2°			

TITLE:		HARTFORD, 0-400 THD ASSEMBLY, STARTER	
SIZE:	B	SHEET:	1 OF 2
DWG NO:	319006790A		



SECTION B-B
SCALE 1:1

VIEW C
SCALE 1:1

ISOMETRIC ASSEMBLED VIEW
(FOR REFERENCE ONLY)

ITEM	QTY	DESCRIPTION	LENGTH	UM	PART NUMBER	MATERIAL	TYP
8	3	CAPSCREW, SOCKET HD 1/4"-20	1.0	EA	*91251A542	STEEL	P
9	1	PIPE PLUG, HEX HIGH PRESSURE 14NPT		EA	*4534K42	STEEL	P
10	REF	ASSEMBLY, STATIONARY DIE BLOCK		EA	319001710A		D
11	1	PIN, HARDENED DOWEL 3/8" DIA		EA	*98381A628	STEEL	P
12	1	SPRING, STARTER ARM LEVER		EA	3190-2-P71	STEEL	D
13	1	CAPSCREW, SOCKET HD 5/16"-18	.50	EA	*91251A578	STEEL	P
14	1	PLATE, STARTER LEVER		EA	319006780		D
15	1	BUMPER, STARTER LEVER		EA	3190-2-P82		D
16	1	ADAPTER, BUMPER		EA	319001860		D
17	1	STUD, STARTER LEVER ADJUSTING		EA	319008240		D
18	1	SUPPORT, HEAD		EA	319006380		D
19	2	CAPSCREW, BUTTON HD 10-32		EA	*91255A263	STEEL	P
20	1	WASHER, STARTER FINGER (KEYED)		EA	319000820		D
21	1	NUT, FLEX TOP LOCK 7/8"-9 THD		EA	*94828A037	STEEL	P
22	1	STUD, FULCRUM		EA	319012060		D
23	1	BUTTON, FULCRUM STOP		EA	319003190		D
24	1	FULCRUM		EA	319011870		D
25	1	ASSEMBLY, STARTER CLAMP		EA	319004520A		D
26	1	CAM, STARTER		EA	319000540		D
27	1	WASHER, HARDENED 7/8" X 1/8" THK		EA	*98029A037	STEEL	P
28	1	HOLDER, STARTER FINGER		EA	319006260		D
29	1	WASHER, HARDENED 3/8" X 1/8" THK		EA	*98029A031	STEEL	P
30	1	CAPSCREW, SOCKET HD 3/8"-16	1.0	EA	*91251A624	STEEL	P
31	1	CAPSCREW, SOCKET HD 3/8"-16 X 2"	2.0	EA	*90044A146	STEEL	P
32	1	WASHER- HARDENED 3/8" X 1/8" THK		EA	*98029A031	STEEL	P
33	1	WASHER, STARTER FINGER BRACKET		EA	319012370		D
34	4	CAPSCREW- FLAT HD 10-32	.75	EA	*91253A008	STEEL	P
35	1	INSERT, THREADED 3/8"-16		EA	*97191A270	STEEL	P
36	1	KEY, STARTER FINGER BRACKET		EA	319012360		D
37	1	BRACKET, STARTER LEVER		EA	319012350		D
38	REF	FINGER, STARTER		EA	3190016XX		D
39	4	CAPSCREW, BUTTON HD 10-32		EA	*91255A263	STEEL	P
40	1	SPACER, BEARING CLAMP SEAL		EA	319001870		D
41	1	GASKET, STARTER PIVOT		EA	319004210		D
42	1	SEAL, STARTER PIVOT SHAFT		EA	3190-2-P78	BUNA	P
43	1	SPACER, OUTER BEARING		EA	319001850		D
44	1	SPACER, INNER BEARING		EA	319001900		D
45	2	BEARING, STARTER ARM PIVOT		EA	3190-2-P80	STEEL	P
46	1	RING, RETAINING		EA	3190-2-P81	STEEL	P
47	1	SHAFT, STARTER PIVOT		EA	319001960		D
		* PURCHASE FROM McMASTER-CARR					



THIS DRAWING IS THE PROPERTY OF REG-ELLEN MACHINE TOOL. IT SHALL NOT BE COPIED (IN WHOLE OR IN PART) FOR MANUFACTURE OR OTHERWISE DISCLOSED WITHOUT PRIOR WRITTEN CONSENT.

TOLERANCES		SCALE: 1:1
MACHINING	FABRICATION	DRAWN BY: MLGATES
X, ±.040	ALL ±.06	DATE: 15AUG18
X.X ±.020	ANGULAR 2°	CHECKED BY:
X.XX ±.010	ALL FINISHES 125mu	DATE:
X.XXX ±.005	DEBURR ALL SHARP CORNERS OR EDGES	
ANGULAR ± 1/2°		

TITLE: HARTFORD, 0-400 THD ASSEMBLY, STARTER		
SIZE: B	SHEET: 2 OF 2	REV:
DWG NO: 319006790A		

AUTOCAD DRAWING: FORM REVISION 13MAR12